

## 溢流阀 pressure relief valves

座阀式两级溢流阀。板式安装，可以装配用于卸荷的电磁阀而形成电磁溢流阀。最高压力可达350 bar

double stage pressure relief valves with balanced poppet • subplate mounting, can be equipped with a venting solenoid valve • pressure up to 350 bar

### SAGAM - 10 / 10 / 210 / V - X 24DC \*\*

溢流阀  
Pressure relief valve

通径 size

10 = 最大流量 200 l/min  
max flow  
20 = 最大流量 400 l/min

仅对电磁卸荷型：  
only for valves with venting

10 = 电磁铁失电泄压  
with de-energized solenoid  
11 = 电磁铁得电卸压  
with energized solenoid

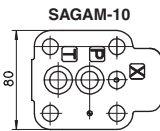
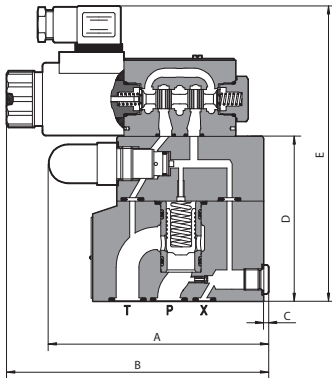
设计号 Series number

电源电压 (2) Voltage supply

选项  
Option

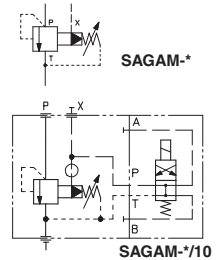
**X** = 不带接头 without connector  
**XJ, XK, XS** = 见第2页中直动式阀资料  
see direct operated solenoid valves - pag. 2  
**E** = 外控 external pilot  
**V** = 调节手轮 regulating handwheel  
**WP** = 手动推杆采用橡皮帽保护  
manual override protected by rubber cap  
**Y** = 外泄 external drain

压力范围 (bar) pressure range  
50 = 4÷50 100 = 6÷100 210 = 7÷210 350 = 8÷350

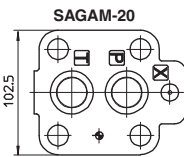


**安装界面**  
ISO 6264-06-09-1-97  
紧固螺钉：  
4个内六角螺栓M12x35  
O型密封圈：2个123；1个109/70  
P, T 口尺寸：Ø = 14,5 mm  
X 口尺寸：Ø = 3,2 mm

**Mounting surface**  
ISO 6264-06-09-1-97  
Fastening bolts:  
4 socket head screws M12x35  
Seals: 2 OR 123; 1 OR 109/70  
Ports P, T: Ø = 14,5 mm  
Ports X: Ø = 3,2 mm

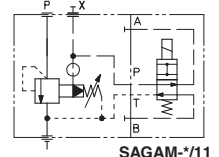


SAGAM-\*/10



**安装界面**  
ISO 6264-08-11-1-97  
紧固螺钉：  
4个内六角螺栓M16x50  
O型密封圈：2个4112；1个109/70  
P, T 口尺寸：Ø = 24 mm  
X 口尺寸：Ø = 3,2 mm

**Mounting surface**  
ISO 6264-08-11-1-97  
Fastening bolts:  
4 socket head screws M16x50  
Seals: 2 OR 4112; 1 OR 109/70  
Ports P, T: Ø = 24 mm  
Ports X: Ø = 3,2 mm



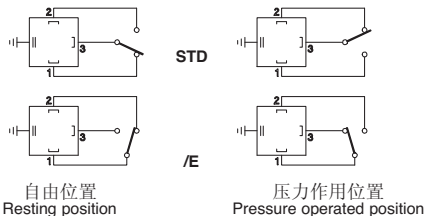
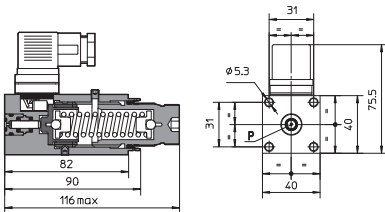
SAGAM-\*/11

尺寸 Dimension	A	B	C	D	E
SAGAM-10	136	154	3,5	103	184
SAGAM-20	138	156	2,0	116	197

## 压力继电器 pressure switches

当液压系统压力达到该压力继电器设定的压力时，压力继电器便能产生一个触点断/开的电信号。压力由转动调节螺母而设定，压力设定有一定的压力差范围。

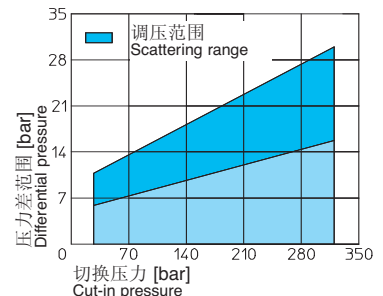
are designed to produce an electronical make-break contact when pressure in hydraulic circuit reaches the pressure setting • the pressure setting is selected by adjusting a graduated control knob • the setting has a fixed pressure differential



### SMAP - 160 / E

压力范围 [bar]  
Pressure range  
40 = 3 ÷ 40  
80 = 4 ÷ 80  
160 = 8 ÷ 160  
320 = 16 ÷ 320  
630 = 16 ÷ 320

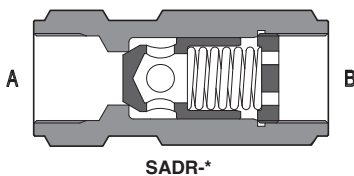
选项 - Option  
**E** = 公共电气接点  
为插芯1  
Common electric  
contact connected  
to pin 1



## 管式单向阀 check valves

SADR是直动式管式安装单向阀 • 最大流量达360 l/min

SADR are directed operated check valves for in-line mounting • max flow up to 360 l/min



### SADR - 10 / 4 \*\*

管式安装单向阀  
Check valve in-line mounting

尺寸/螺纹连接  
Size/threaded connections  
06 = G 1/4" 10 = G 3/8"  
15 = G 1/2" 25 = G 1"

系列号  
Series number

开启压力  
Cracking pressure  
- = 0,5 bar /2 = 2 bar  
/4 = 4 bar /8 = 8 bar